

# VALENTUS

## COMPENSATION PLAN

### UNITED KINGDOM

Valentus launched the ultimate compensation plan with a profit structure unparalleled by any pay plan in the direct marketing industry. Four top pay plan experts got together and equipped Valentus with 7 POWER BONUSES that can help you achieve the lifestyle of your dreams faster than was ever possible before.



### VALENTUS PLAN

- 1** RETAIL COMMISSIONS 25%
- 2** FIRST TIME ORDER BONUS  
Up to \$100 (USD)
- 3** LEGACY CODED BONUS \$100 (USD)  
Unblocked to Unlimited Levels
- 4** DUAL TEAM COMMISSIONS  
Up to \$100 (USD) Per Week
- 5** DUAL TEAM MATCHING BONUS  
Seven Levels Starting at 20%
- 6** 1% GLOBAL VOLUME SHARED  
ENROLLMENT POOL
- 7** VEHICLE BONUS \$400 to \$3,000  
(USD) Monthly

We trade in U.S. Dollars. Your credit or debit card company will convert the amount into GBP.



**WEB SITE/BACK OFFICE - \$20.00 (USD) ONE-TIME ACTIVATION FEE. NO ANNUAL FEE.**

PACKAGES	COST(USD)	BUSINESS/VOLUME(BV)	LEADERSHIP RANK BENEFIT
Basic	1 box - \$59.95	50 BV	Qualified as an Independent Representative (IR).
Starter	3 boxes - \$129.95	100 BV	Qualified as a Gold IR for the remainder of the month you join, PLUS the entire following month.
UK Entry	6 boxes - \$199.95	150 BV	Qualified as a Platinum IR for the remainder of the month you join, PLUS the entire following month.
UK Leadership Upgrade*	10 boxes - \$299.95	250 BV	Qualified in connection with an UK Entry Pack as a Ruby IR. *Available after 7 days from start and in connection with a UK Entry Pack. A 7-day. Automatic Upgrade Option is Offered.
Career Success	36 boxes \$1199.95	800 BV	<b>NOTE:</b> Automatically qualified as an Emerald IR. No activation fee.

**IR'S EARN NO COMMISSION ON ACTIVATION FEE.**

### 1. RETAIL COMMISSIONS - PAID WEEKLY

25%. All orders from your web site count as personal BV towards your monthly requirement for commissions. To earn retail commissions you must maintain a minimum of 50BV personal volume each month (Monthly Personal Purchase optional).

#### Valentus Preferred Customer Loyalty Reward Program

Preferred customers purchase at wholesale \$59.95 (USD) per box on a Monthly Personal Purchase. If they refer TWO Preferred Customers who set up and purchase their own Monthly Personal Purchase (product value equal to or greater than their own autodelivery option), then the referring Preferred Customer's next month's scheduled auto-delivery Personal Purchase will be FREE (not including shipping costs and any applicable sales taxes charged to the Preferred Customer). If a Preferred Customer refers two Preferred Customers, he/she no longer qualifies for a free product for the Preferred Customer superior to them. In this case, the superior must first refer a new Preferred Customer to once more qualify for a free product.

## 2. FIRST ORDER BONUS - PAID WEEKLY

PACKAGES	COST (USD)	BV	FIRST ORDER BONUS	LEGACY BONUS	DUAL TEAM BV ALLOCATION
Basic	1 box - \$59.95	50 BV	\$20	n/a	20 BV
Starter	3 boxes - \$129.95	100 BV	\$40	n/a	40 BV
UK Entry	6 boxes - \$199.95	150 BV	\$60	n/a	60 BV
UK Upgrade*	10 boxes - \$299.95	250 BV	\$40	\$100	40 BV

*\*7-day Automatic Upgrade Option Offered.*

If your first order is the Basic, Starter or UK Entry Pack, you will be required to either purchase the UK Leadership Upgrade Pack should you decide to upgrade or retail the equivalent amount of product using your IR retail website to qualify as a Ruby IR. Upgrade purchases are commissionable under the First Order Bonus. Subsequent whole packages are commissionable in the Dual Team Cycle structure.

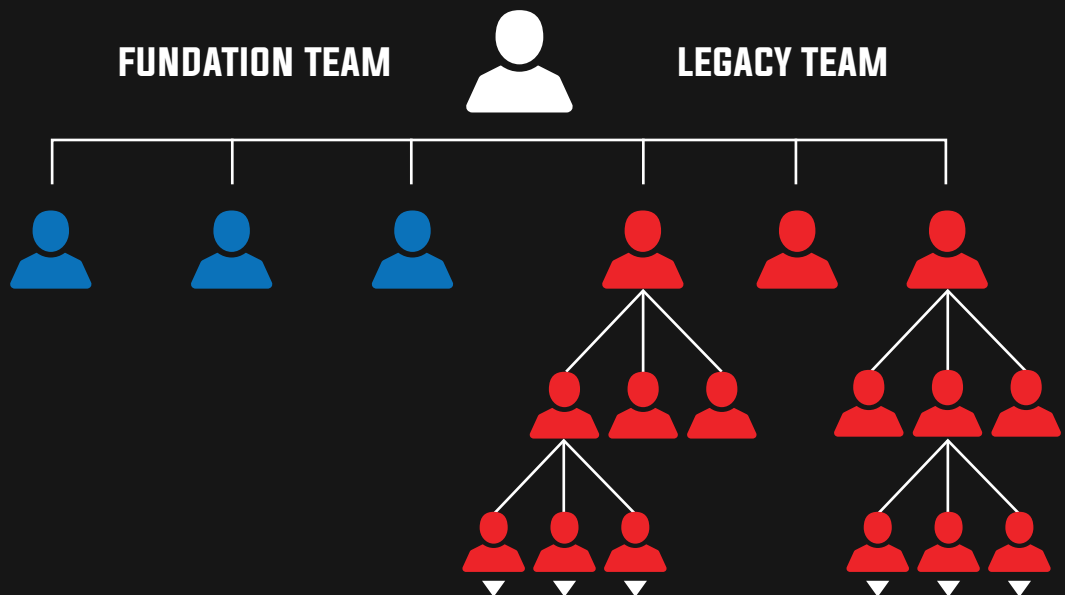


### 3. LEGACY-CODED QUALIFICATION BONUS - \$100.00 (USD) - PAID WEEKLY

This \$100.00 (USD) bonus is paid on the successful qualification of a new **Ruby IR qualified** status who either purchases (or during the same enrollment month upgrades to) a \$299.95 (USD) UK Leadership Upgrade Pack (following their UK Entry Pack purchase), or who has successfully sold through retail sales the equivalent 400BV amount in their first calendar month, and have an active 100BV Monthly Personal Purchase to maintain qualifications for this bonus.

Your first **THREE** sponsored and qualified Ruby IR's pays a \$100 Legacy Qualification Bonus to your first generation upline enroller who is a Legacy Qualified Ruby IR. After you have successfully achieved qualifying your first three Ruby IR's, beginning with your **FOURTH** personally qualified Ruby IR and onwards thereafter, the \$100 Legacy Qualification Bonus will be paid to you and on every qualified Ruby IR that you personally sponsor, and any additional Ruby IR's that are sponsored and qualified by your entire legacy organization down to unlimited levels, unblocked.

Each IR works to complete their Foundation Team. Each of the IR's they enroll in their Foundation Team are linked to you in your Legacy Team. This means that each IR in your Legacy Team must enroll 3 IR's that are in your Legacy Team **before** they start their own Legacy Team. Each IR works to complete their Foundation Team. Each of the IR's they enroll and or qualify in their Foundation Team are linked to you in **your** Legacy Team. This means that each IR in your Legacy Team must enroll and qualify 3 IR's that will remain in your Legacy Team **before** they start their own Legacy Team subsequently thereafter.



#### 4. DUAL TEAM CYCLE COMMISSIONS - \$20.00 (USD) PER CYCLE - PAID WEEKLY

The First Order Bonuses and Legacy Qualification Bonuses are paid out first before any BV is calculated in the DTC Commissions structure. The chart below shows the amount of BV from each of the Product Packages that is calculated in the DTC Commission structure.

PACKAGES	DUAL TEAM BV ALLOCATION (FIRST ORDER ONLY)	DUAL TEAM BV ALLOCATION (ADDITIONAL ORDERS)
Basic	20 BV	50 BV
Starter	40 BV	100 BV
Uk Entry	60 BV	150 BV (As "Advanced Pack")
UK Leadership Upgrade*	40 BV*	N/A
Career Success	TBD	TBD

**ADDITIONAL** Any additional Product Packages or orders purchased after the First Order and monthly Personal Purchases are calculated in the DTC Commissions structure using 100% BV value.

You cycle every time the computer sees 200BV on your stronger team and 100BV on your lesser team, with a weekly earnings potential of up to \$100,000 (USD). All DTC Commissions are subject to the IR reaching the required qualifications.

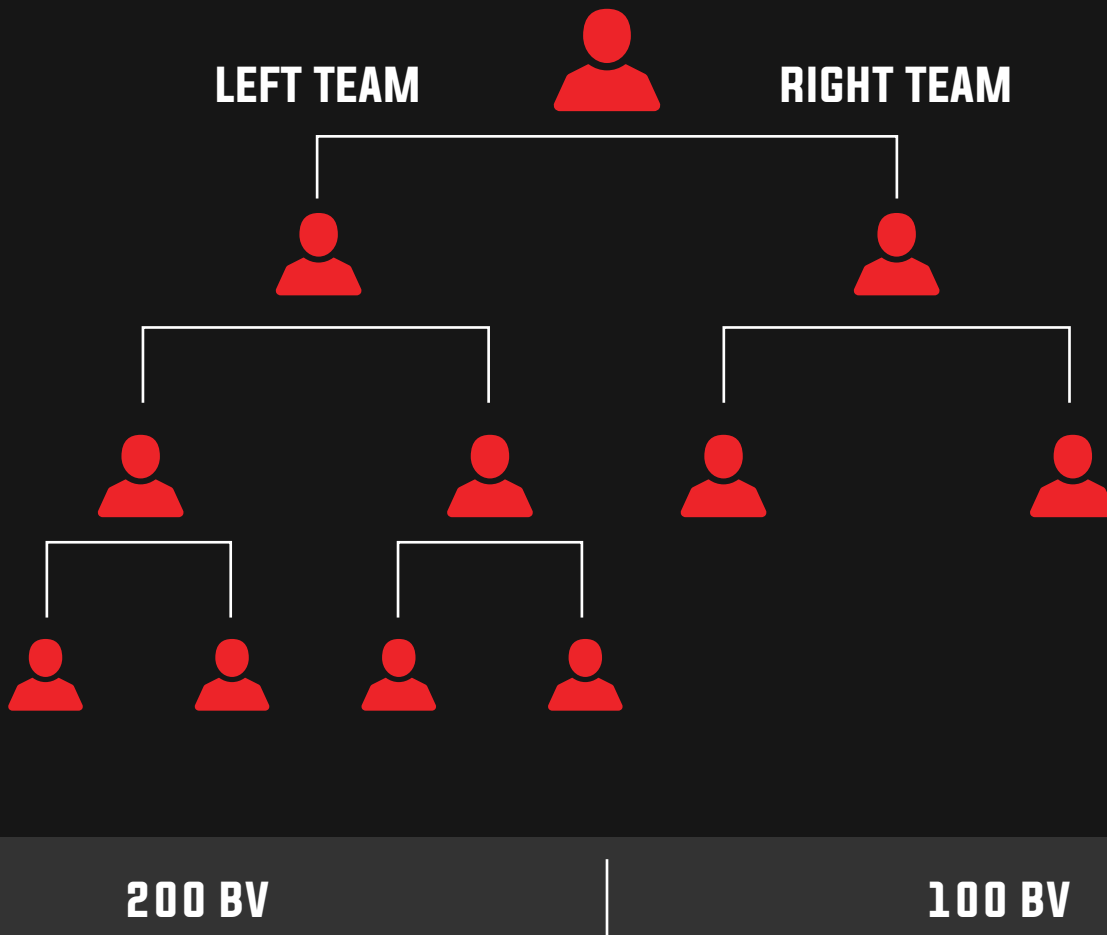
---

#### QUALIFICATION:

To qualify for DTC Commissions, you are required to personally produce a Personal Purchase of 50BV or greater and sponsor a minimum of two (2) IR's - one placed on the left team and one placed on the right team - who each produce a Personal Purchase of 50BV or greater. If you do not satisfy the DTC Commissions qualification, but maintain a minimum 50BV in a Monthly Personal Purchase, the computer will automatically accumulate and store unpaid sales volumes in your team(s) for future commissions calculations (upon qualification).

---

## DUAL TEAM CYCLE COMMISSIONS CHART



---

**1 CYCLE = \$ 20.00 (USD)**  
**CYCLE UP TO \$100,000 (USD) PER WEEK!**

---

## RANK ACHIEVEMENTS REQUIREMENTS

LEADERSHIP RANK INDEPENDENT REPRESENTATIVE (IR)	MONTHLY BV REQUIRED	MINIMUM # OF PERSONALLY ENROLLED RANK IR'S	MINIMUM MONTHLY TOTAL BV LESSER LEG	MINIMUM MONTHLY ENROLLER TREE BV IN EACH TEAM LEG	MONTHLY BV AUTO-DELIVERY OPTION
Silver	50 BV	2 IR's at 50 BV	n/a	50	n/a
Gold	100 BV	2 Silvers	500	50	100 BV
Platinum	100 BV	2 Golds	1,000	100	100 BV
Ruby	100 BV	2 Platinitums	2,000	200	100 BV
Emerald	100 BV	3 Rubies	5,000	500	100 BV
Diamond	100 BV	3 Emeralds	15,000	1,500	100 BV
Double Diamond	100 BV	2 Emeralds & 1 Diamond	30,000	3,000	100 BV
Triple Diamond	100 BV	1 Emerald & 2 Diamonds	100,000	10,000	100 BV
Blue Diamond	100 BV	3 Diamonds	250,000	25,000	100 BV
Royal Diamond	100 BV	4 Diamonds	500,000	50,000	100 BV
Black Diamond	100 BV	4 Diamonds	750,000	75,000	100 BV
Crown Diamond	100 BV	4 Diamonds	1,000,000	100,000	100 BV
Crown Ambassador	100 BV	4 Diamonds	1,500,000	150,000	100 BV

## DUAL TEAM COMMISSIONS, MAXIMUM CYCLE EARNINGS, MAXIMUM MATCH EARNINGS AND CAR BONUS

RANK	DUAL TEAM INCOME CYCLE VALUE	MAXIMUM # OF DUAL TEAM CYCLES PER WEEK	MAXIMUM DUAL TEAM CYCLE COMMISSIONS PER WEEK (USD)	MAXIMUM DUAL TEAM MATCH BONUS COMMISSIONS PER WEEK (USD)	MAXIMUM MONTHLY CAR BONUS (USD)
Silver	\$5	5	\$25	\$50	n/a
Gold	\$10	10	\$100	\$100	n/a
Platinum	\$10	20	\$200	\$250	n/a
Ruby	\$20	20	\$400	\$500	n/a
Emerald	\$20	50	\$1,000	\$1,000	n/a
Diamond	\$20	100	\$2,000	Unlimited	\$400
Double Diamond	\$20	200	\$4,000	Unlimited	\$800
Triple Diamond	\$20	400	\$8,000	Unlimited	\$1,000
Blue Diamond	\$20	800	\$16,000	Unlimited	\$1,500
Royal Diamond	\$20	1,600	\$32,000	Unlimited	\$2,000
Black Diamond	\$20	2,400	\$48,000	Unlimited	\$2,000
Crown Diamond	\$20	3,500	\$70,000	Unlimited	\$3,000
Crown Ambassador	\$20	5,000	\$100,000	Unlimited	\$3,000



## 5. SEVEN LEVELS OF DUAL TEAM MATCHING BONUSES - PAID WEEKLY

This bonus is earned on the Dual Team Cycle Commissions earnings of all IR's in your personal enrollment tree, unlimited.

**Qualification:** Maintain 100BV monthly.

LEVEL	SILVER	GOLD	PLATINUM	RUBY	EMERALD	DIAMOND	BLUE DIAMOND	CROW DIAMOND
1	10%	15%	15%	20%	20%	20%	20%	20%
2			10%	10%	15%	15%	15%	15%
3				5%	10%	10%	10%	10%
4				3%	5%	5%	5%	5%
5					3%	3%	3%	3%
6							3%	3%
7								2%

## 6. ENROLLMENT POOL BONUS - PAID MONTHLY

Personally sponsor and qualify (PS&Q) 3 new Ruby IR's in one qualifying calendar month, and personally produce a Monthly Personal Purchase of 100BV for the same calendar month, and you will qualify to earn shares of up to 1% of total company sales for the same qualifying month. Share values will be determined by dividing the total number of all qualified IR's that have PS&Q at least 3 new Ruby IR's in the same qualifying month. The more sets of three (3) PS&Q Ruby IR's you produce, the more shares you earn (ex: 6 PS&Q Ruby IR's in one month equals 2 shares in the pool; 9 PS&Q Ruby IR's equals 3 shares, etc.) This bonus is calculated separately on each calendar month, and is paid by the 10th of the following month.

A \$499 Business Builder Pack enrollment counts towards one of the three PS&Q Ruby IR's required to get one share within this pool ONLY, when an IR orders a Business Builder Pack as their first order. Upgrades to a Business Builder Pack and/or Loyalty BV retail sales exceeding 400BV in future orders do not count towards earning a share in the Enrollment Bonus Pool, unless those purchases are made in the same enrollment month.



## 7. VEHICLE BONUS - PAID MONTHLY

The Car Bonus is earned beginning at the rank of Diamond, and continues for ranks above, and is paid to the qualified IR beginning after two consecutive months of maintaining this status. For example, if you become a fully qualified Diamond in the month of April, and maintain the qualified rank of Diamond for the month of May, you will receive your first Car Bonus in the month of June.

### MONTHLY BV PRODUCTION REQUIREMENTS

To earn certain bonuses in the Valentus compensation plan, a Valentus IR is required to personally produce a minimum amount of monthly business volume (BV), either through the optional Personal Purchase monthly auto-delivery option, and/or sell product(s) through their Valentus IR website to a retail customer(s).

An equivalent (or greater) amount of Valentus product BV under the IR's personal account is required to be achieved and maintained on a calendar month basis, in order to receive the corresponding commissionable entitlements:

- 1 50BV per calendar month Personal Purchase order is required to earn monthly Retail Commissions.
- 2 50BV per calendar month Personal Purchase order is required to earn the First Order Bonus on all personally enrolled Basic, Starter and UK Entry Packages. 100BV Personal Purchase order is required to earn First Order Bonus on all personally enrolled UK Leadership Upgrade Packages.
- 3 100BV per calendar month Personal Purchase order(s) is required to earn the Legacy Qualification Bonus.
- 4 100BV per calendar month Personal Purchase order(s) is required to earn Dual Team Cycle (DTC) Commissions for Gold IR's and above.
- 5 100BV per calendar month Personal Purchase order(s) is required to earn Dual Team Matching Bonus.
- 6 100BV per calendar month Personal Purchase order(s) is required to earn Enrollment Pool Bonus.
- 7 100BV per calendar month Personal Purchase order(s) is required to earn Vehicle Bonus.



## **BONUS SCHEDULE**

Weekly bonuses are paid every Friday, based on the sales of the previous week. Monthly bonuses are paid on the 10th of the following month, based on the sales of the previous month.

## **FLUSHING**

This is a non-flushing dual team plan. Any unused BV that was not eligible for qualification or used to calculate Dual Team Cycle (DTC) Commissions will continue to accumulate in your left and right teams, and will be used in future sales cycles when the accumulation BV amounts and DTC qualifications are achieved. Unused BV that is retained in your left and right teams that has not been utilized after 12 months of inactivity may be subject to a flushing revision, at Valentus Inc.'s discretion.

## **RANK ADVANCEMENT**

Any rank you achieve in a given week will be activated and paid according to that rank the following week. Any unqualified rank, beginning from the rank of Diamond IR or above, who may have lost their active weekly or monthly Diamond IR or above qualification, will be granted a grace period of 30 days in order to re-qualify and retain their Diamond IR or above rank benefits.

---

## **DISCLAIMER**

Valentus is a direct-to-consumer organization that designs, manufactures and markets exclusive products. We don't believe in get rich quick programs. We believe in hard work, dedication, adding value and serving others. As stipulated by law, we cannot and do not make any guarantees about your ability to get results or earn any money with our ideas, information, tools, compensation systems or strategies. We don't know you and, besides, your results in business are up to you and solely determined by your efforts, resources, connections, dedication and application. Nothing in this document or any of our websites is a promise or guarantee of results or future earnings, and we do not offer any legal, medical, tax or other professional advice. Any financial numbers referenced here, or on any of our websites, are simply of an educational nature describing how our programs work and should not be considered exact, actual or as a promise of potential earnings. All numbers are illustrative only. For any concerns beyond the scope of this document, we recommend you seek professional advice.

---